

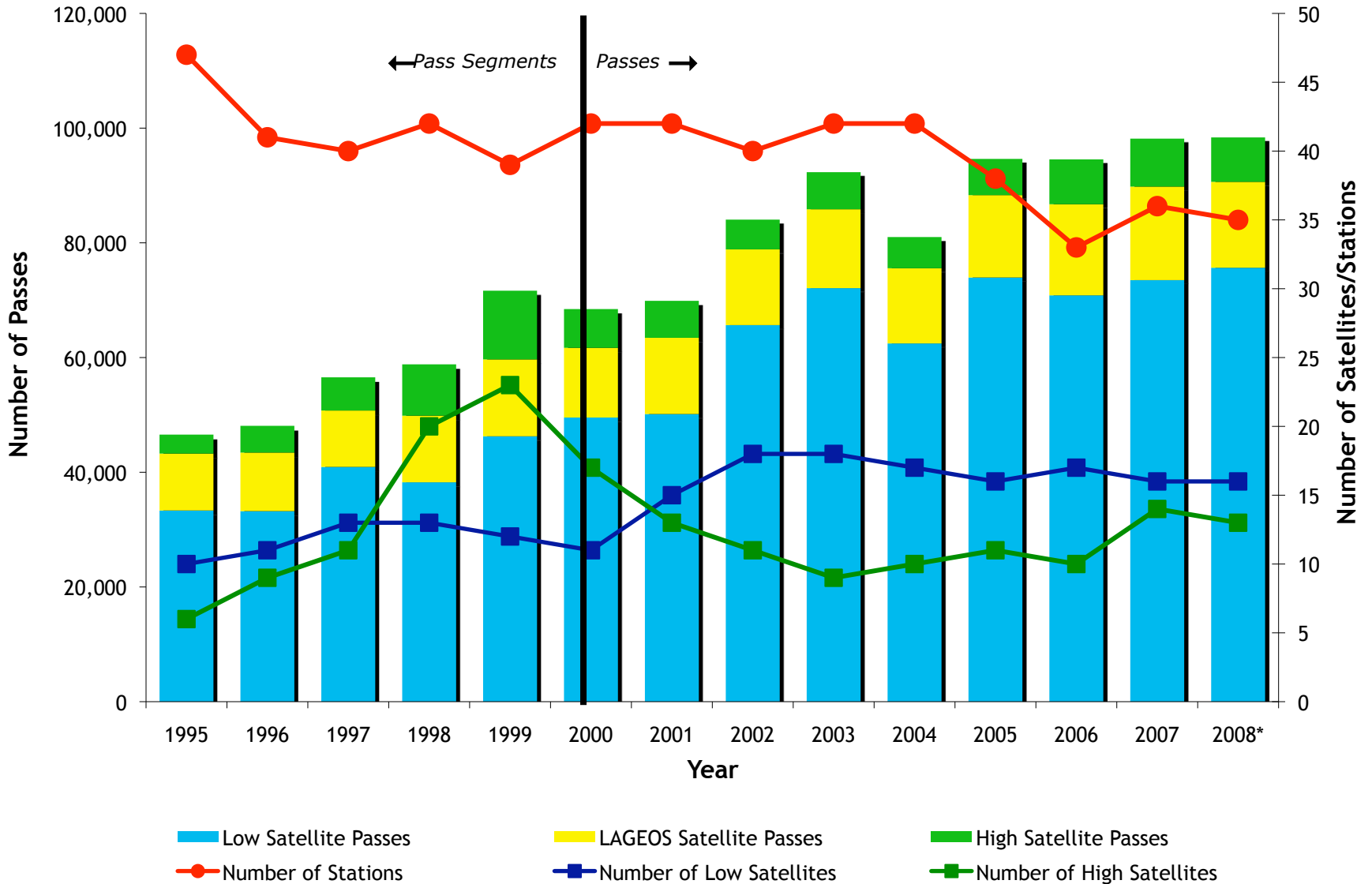


ILRS Network Performance

Michael Pearlman
Carey Noll
ILRS Central Bureau
NASA GSFC, Greenbelt, MD USA
cb@cddis.gsfc.nasa.gov

October 16, 2008

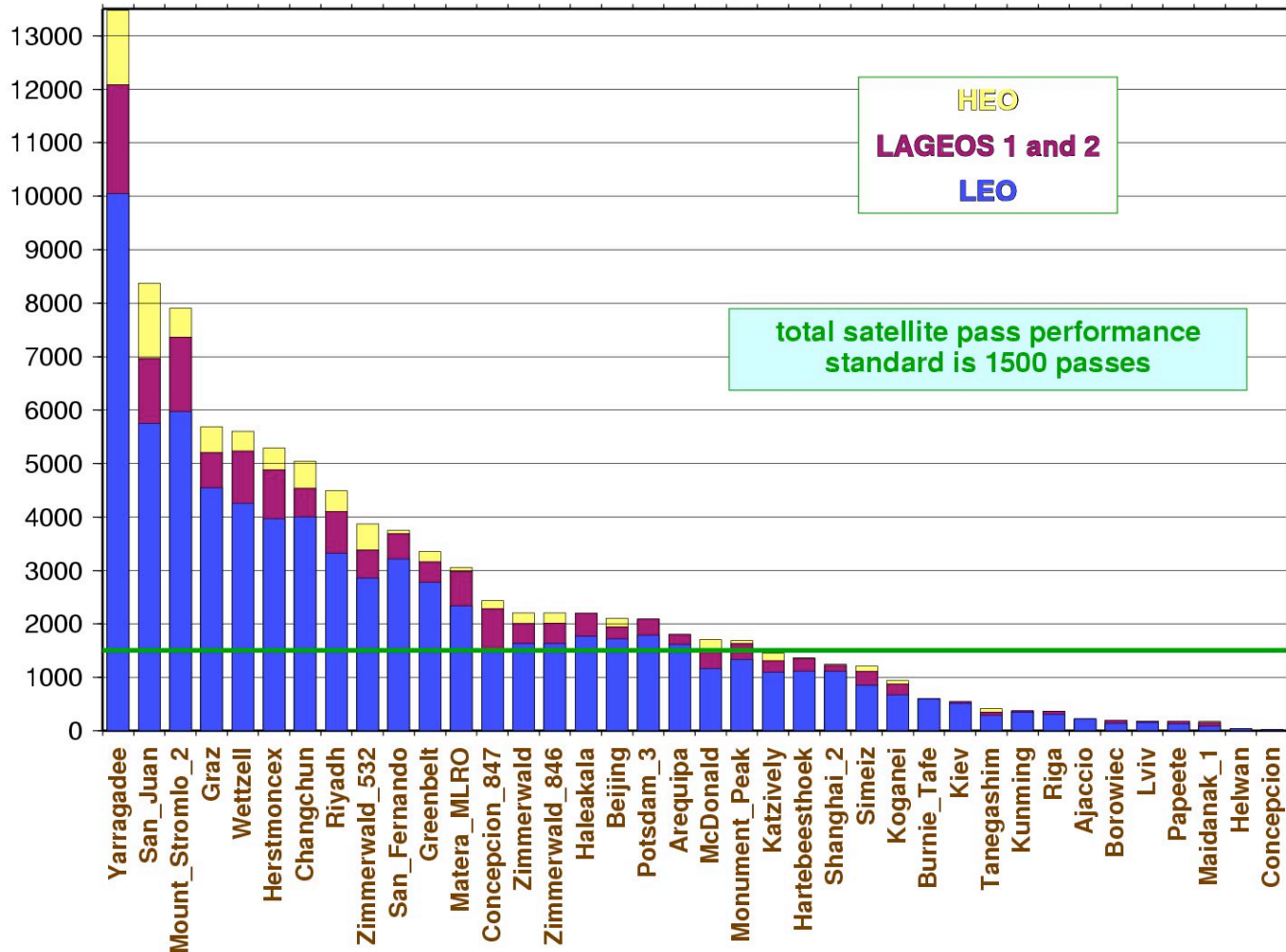
Annual Data Yield



*Note: 2008 totals based on 9 months of data prorated to full year for comparison purposes

ILRS Report Card/2008 Q3 - Total Passes

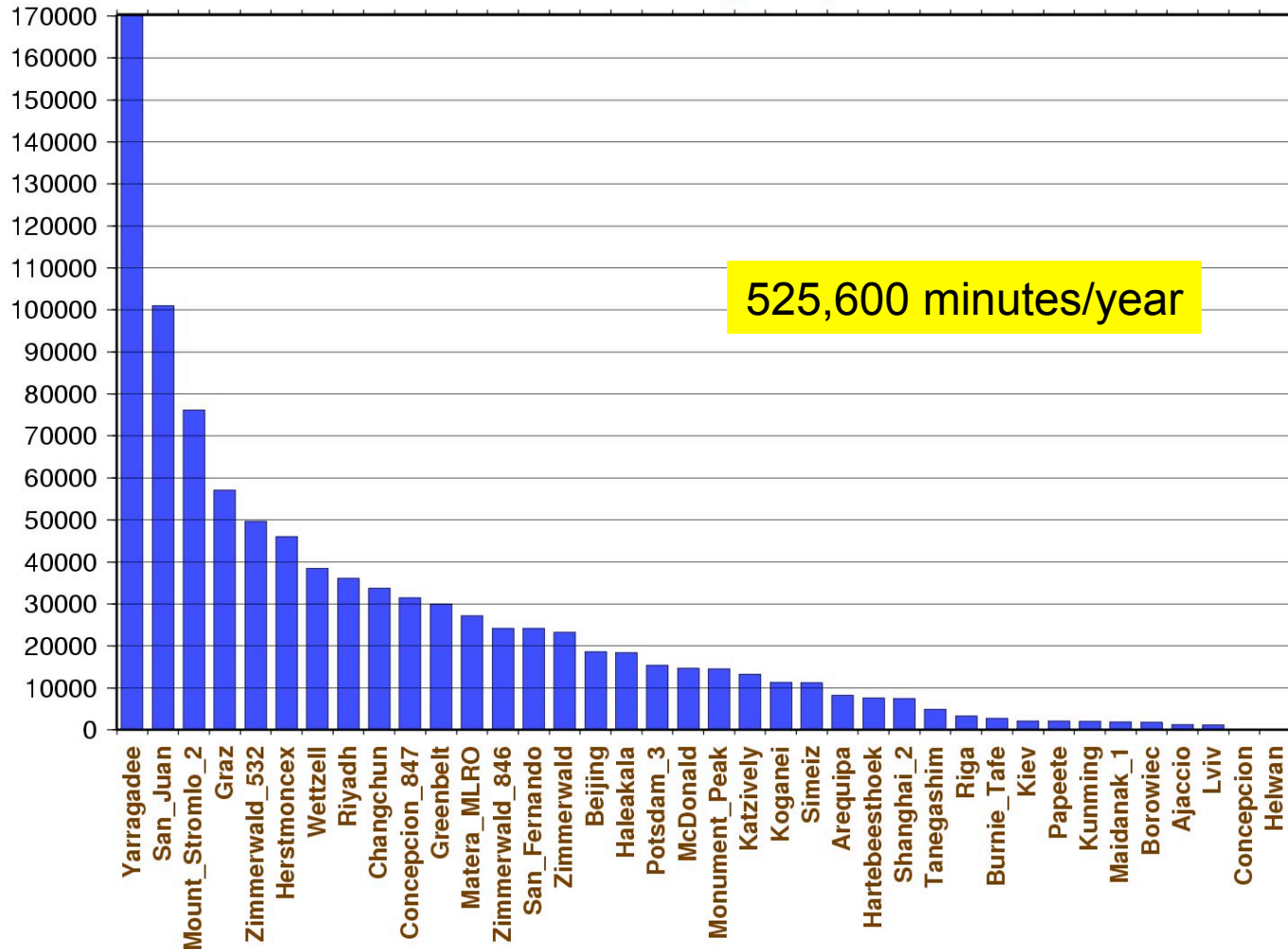
total passes
from October 1, 2007 through September 30, 2008



20080930

ILRS Report Card/2008 Q3 - Minutes of Data

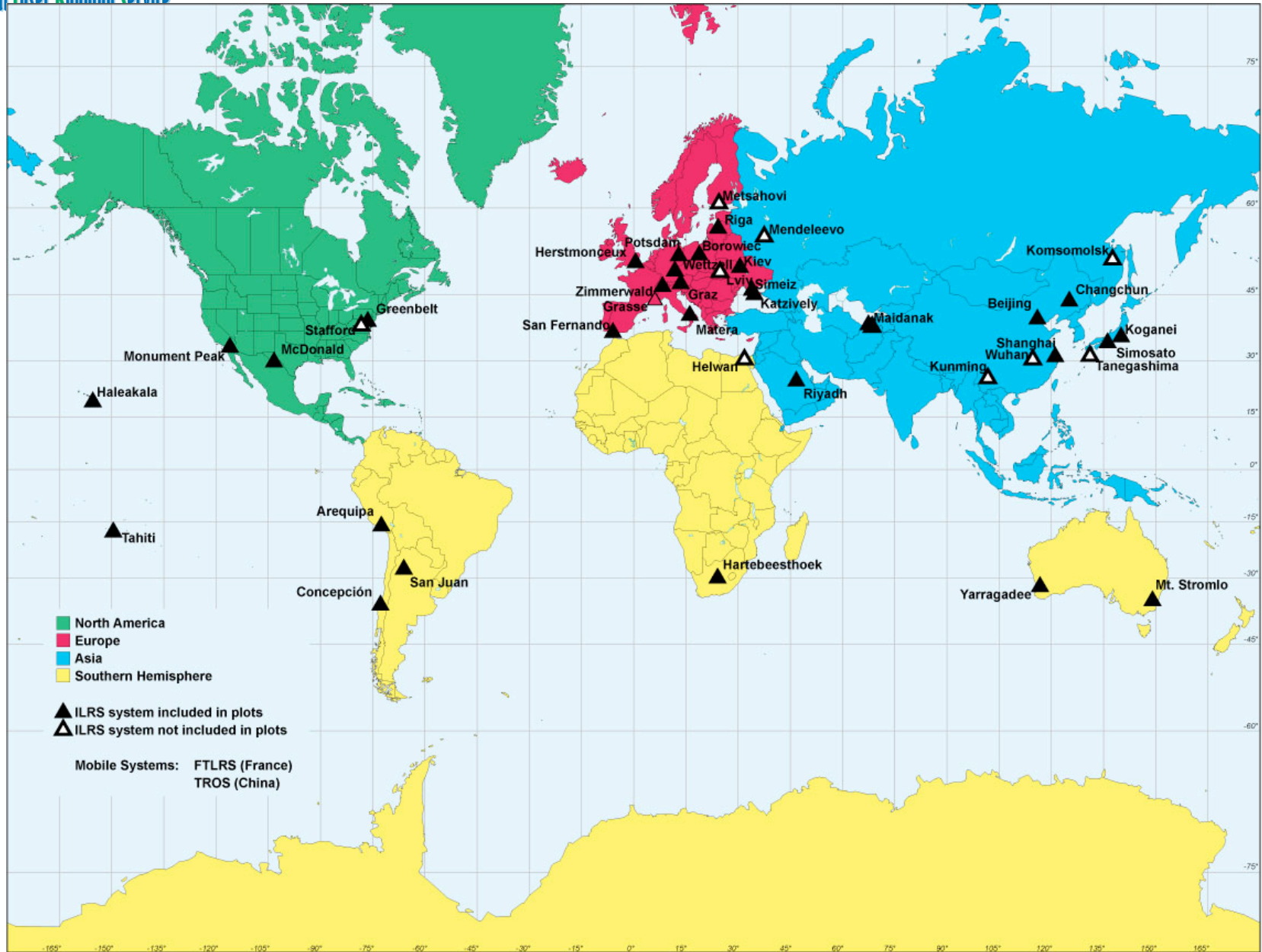
minutes of data
from October 1, 2007 through September 30, 2008



Note: 1 year = 525,600 minutes

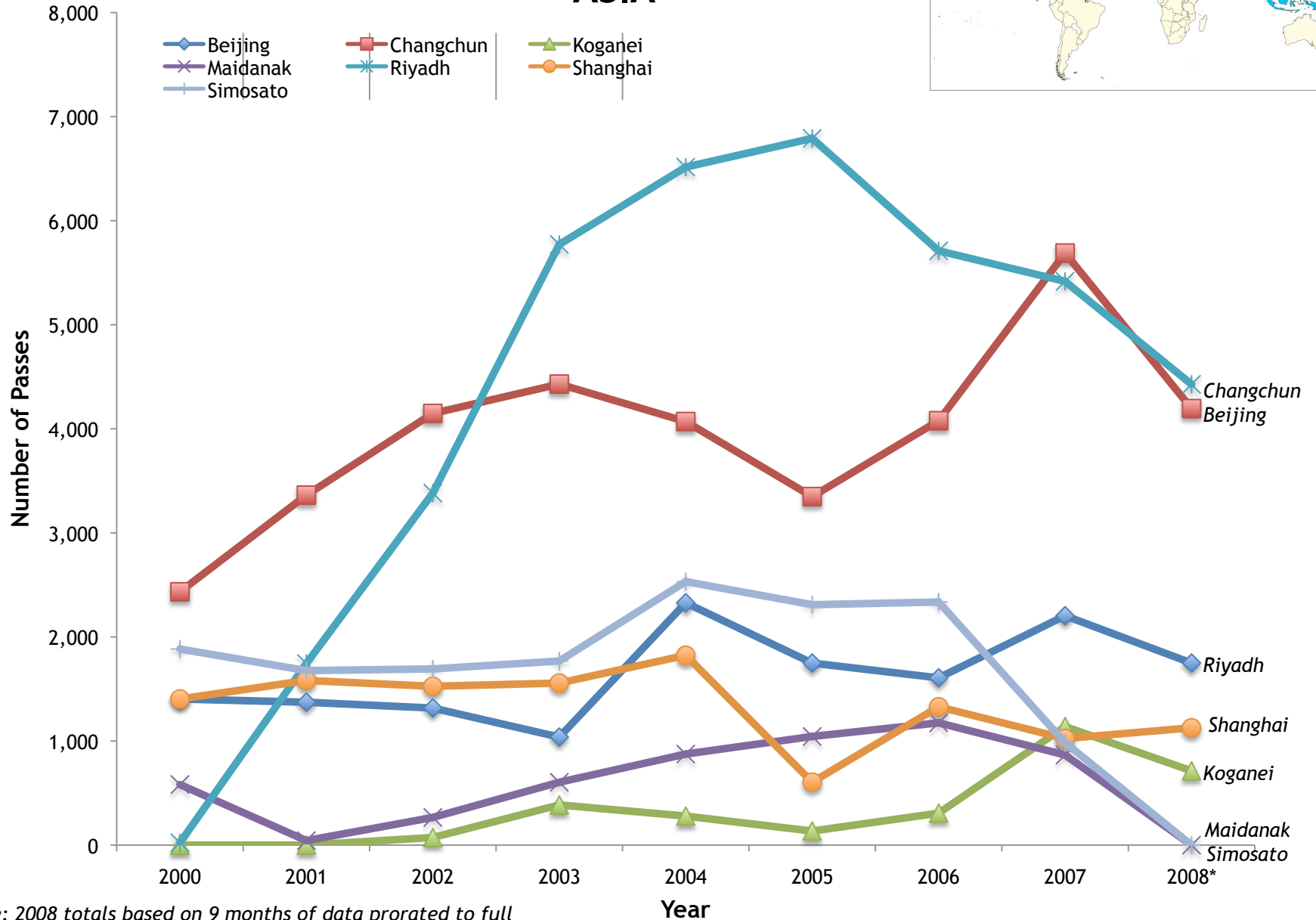
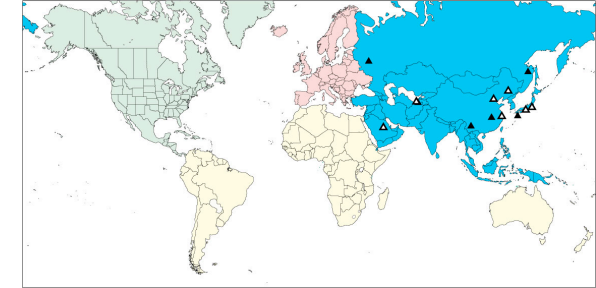
20080930

ILRS Network



Yearly Pass Totals

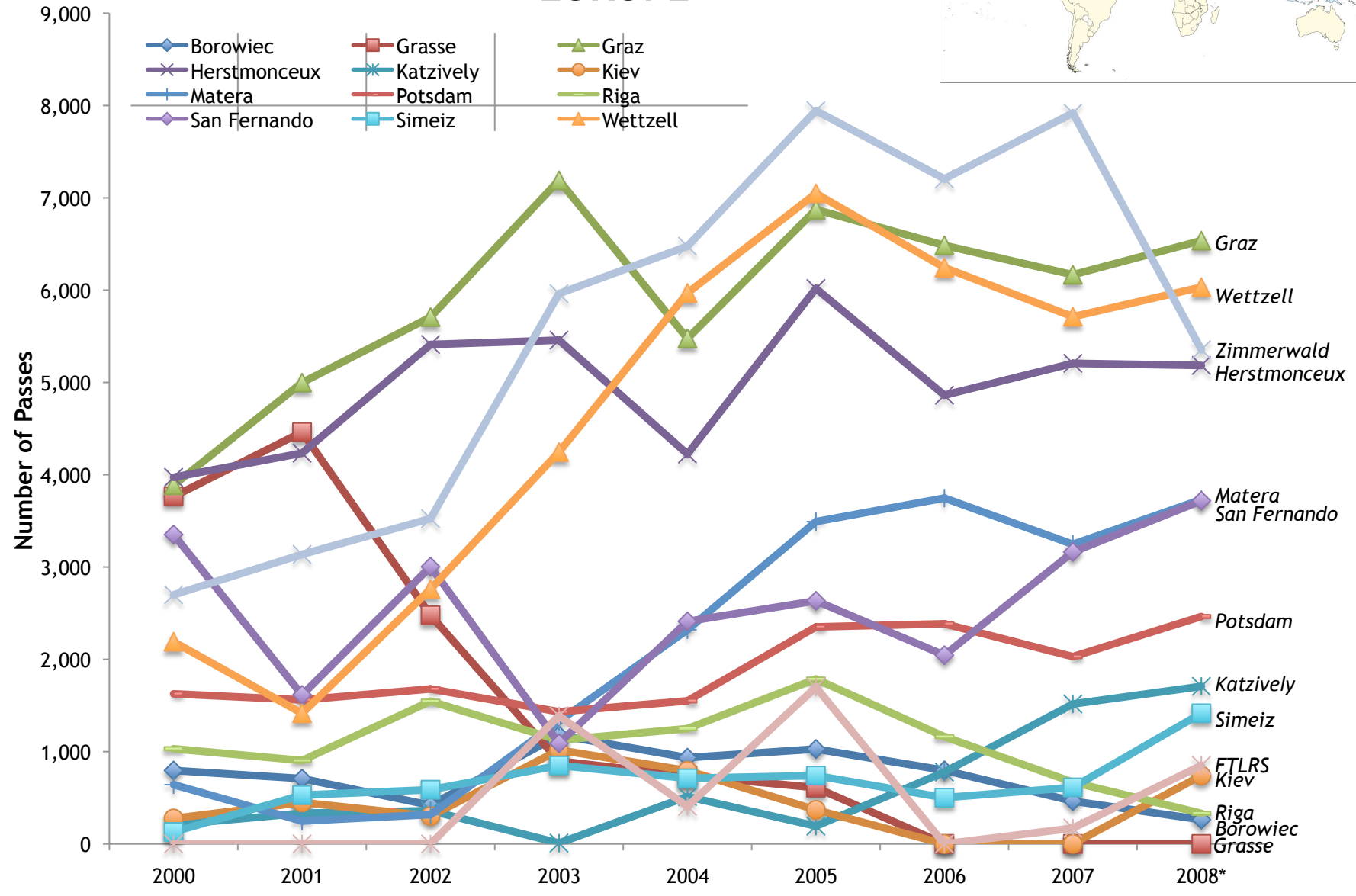
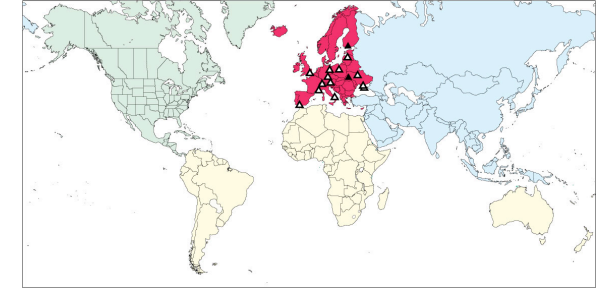
ASIA



*Note: 2008 totals based on 9 months of data prorated to full year for comparison purposes

Yearly Pass Totals

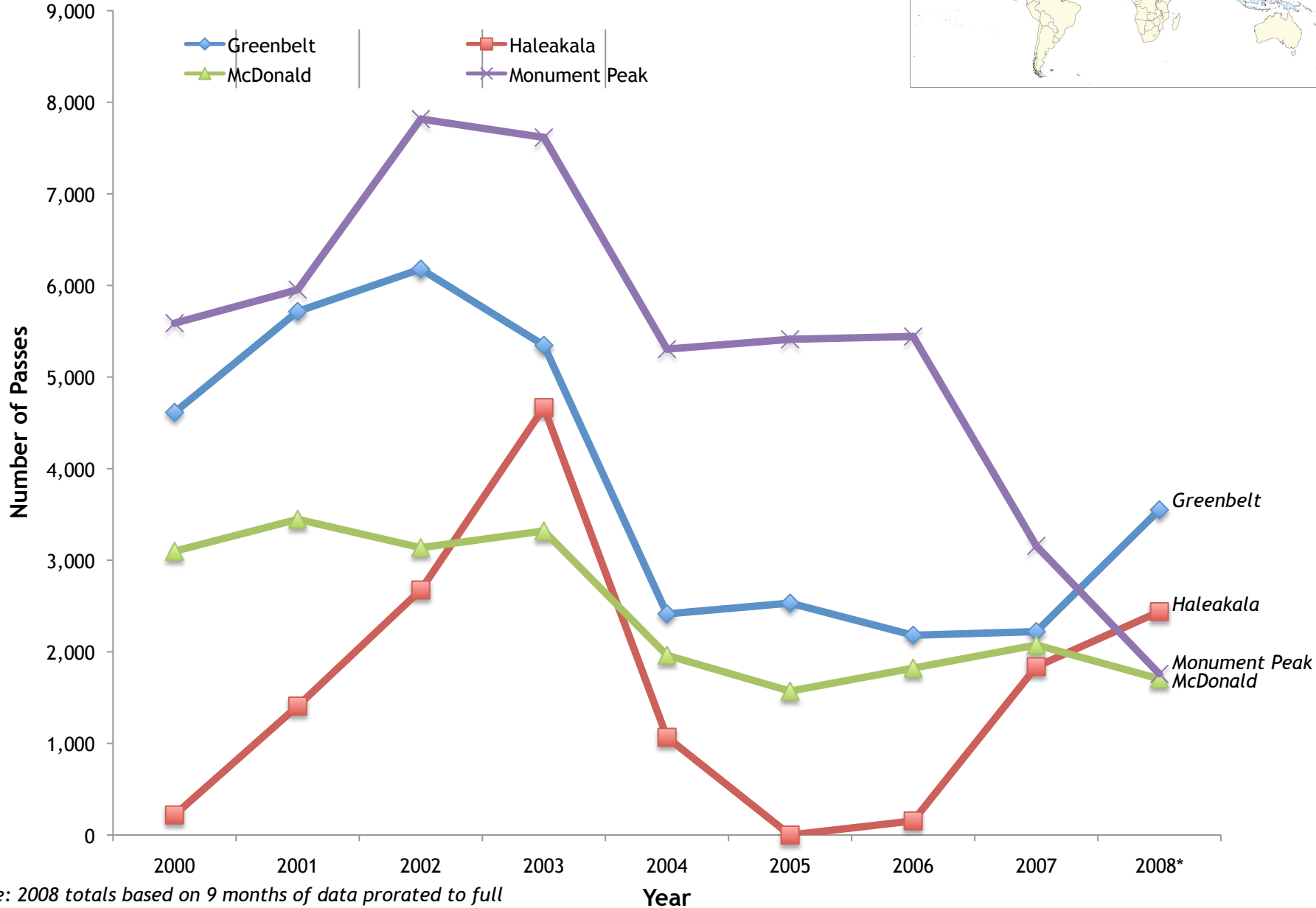
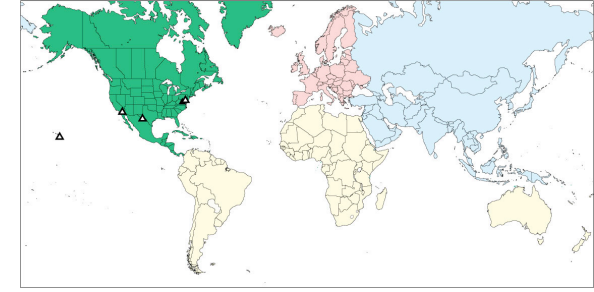
EUROPE



*Note: 2008 totals based on 9 months of data prorated to full year for comparison purposes

Yearly Pass Totals

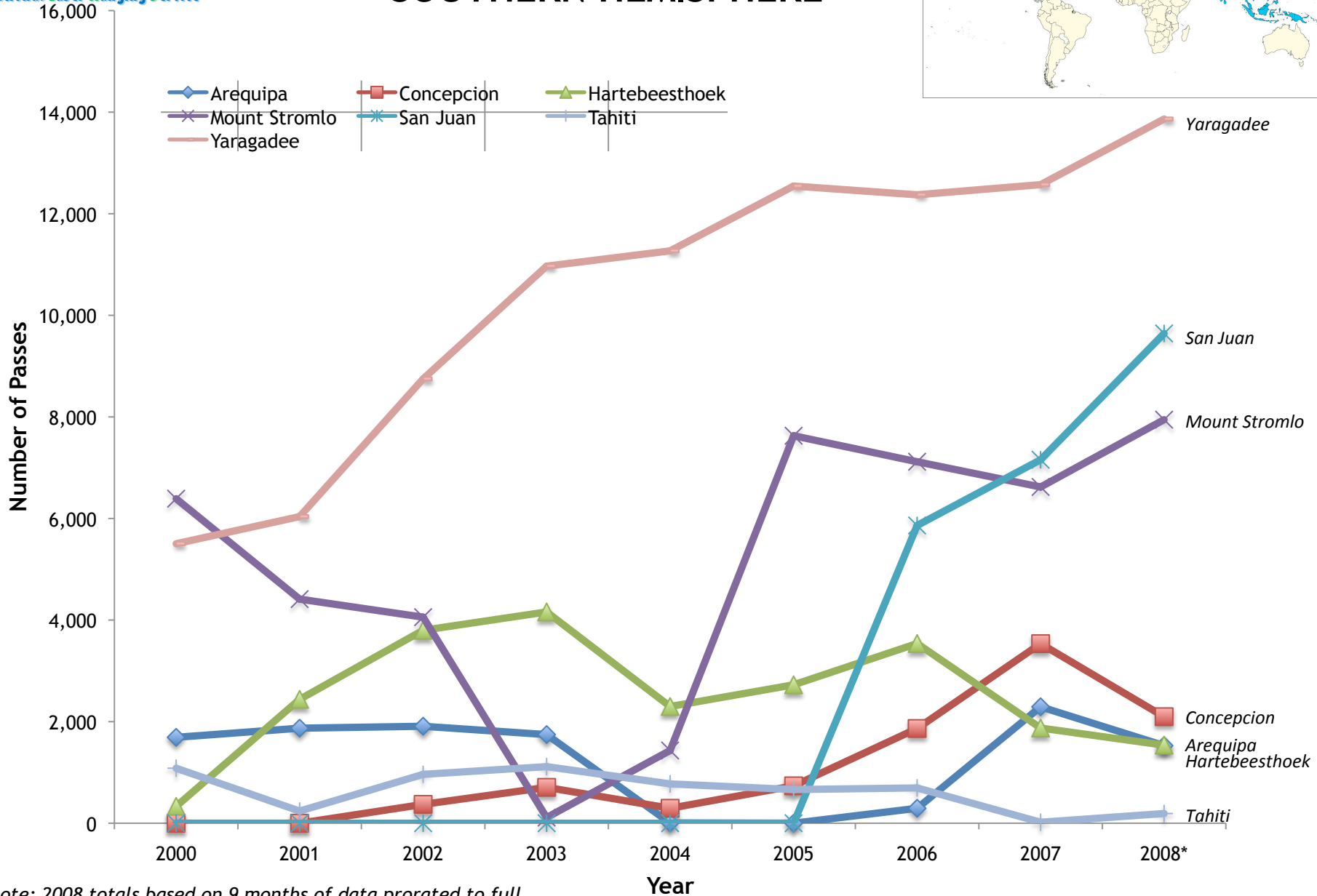
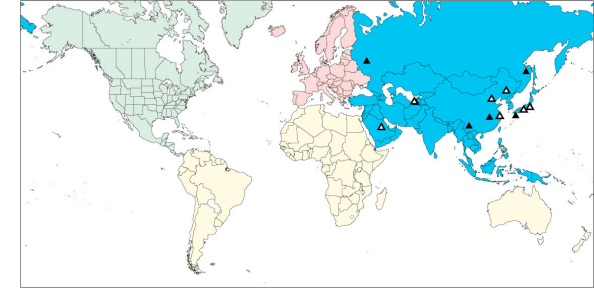
NORTH AMERICA



*Note: 2008 totals based on 9 months of data prorated to full year for comparison purposes

Yearly Pass Totals

SOUTHERN HEMISPHERE



*Note: 2008 totals based on 9 months of data prorated to full year for comparison purposes

ILRS Network-Performing Stations

