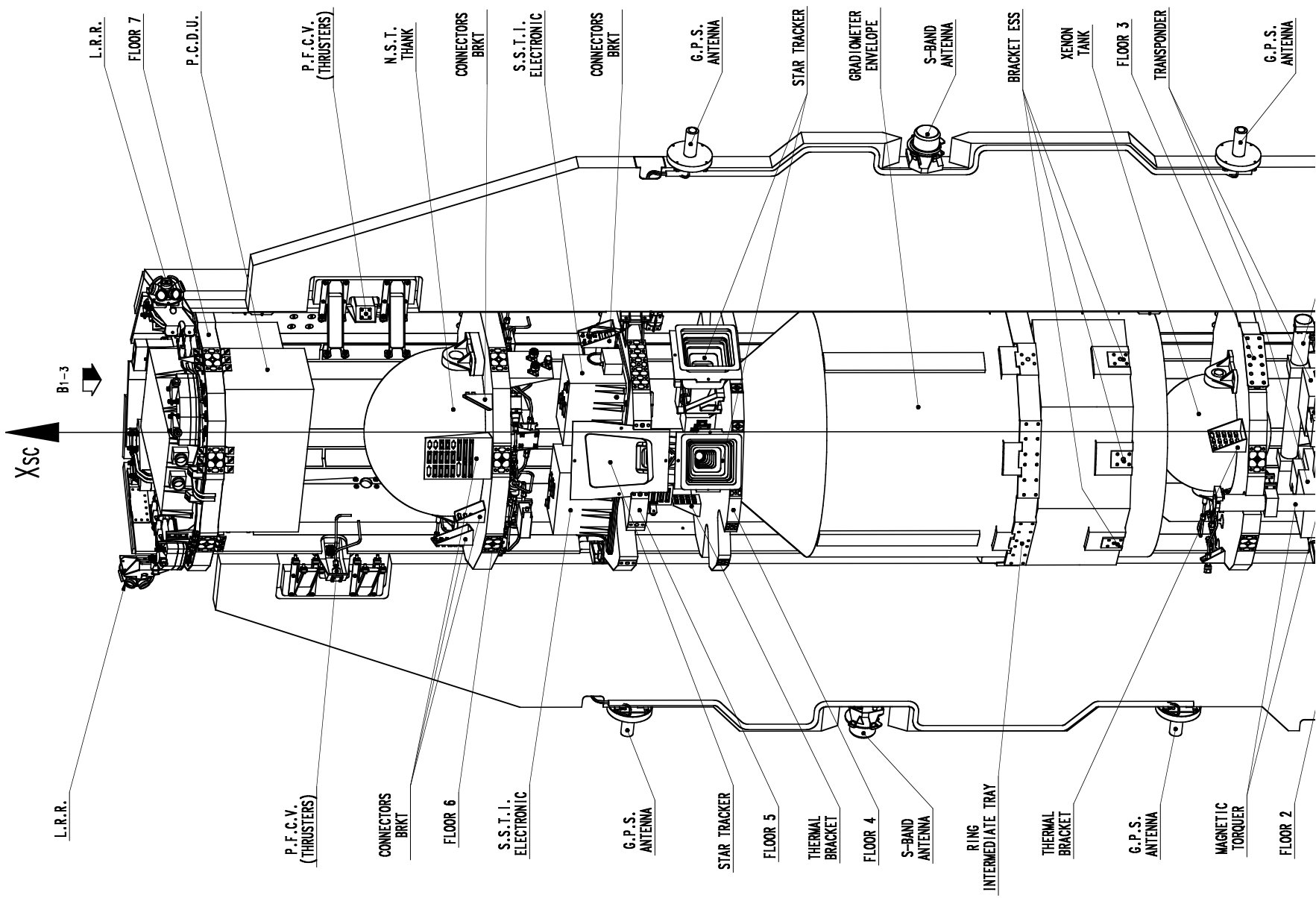


07/09/2004

LIST OF DRAWING DEDICATED TO GOCE S/L CONFIGURATION
AND INTERFACES.

- FIGURE 1 “GOCE S/L OVERALL CONFIGURATION” Sheet 1 of 3
- FIGURE 2 “GOCE S/L OVERALL CONFIGURATION” Sheet 2 of 3
- FIGURE 3 “GOCE S/L OVERALL CONFIGURATION” Sheet 3 of 3
- FIGURE 4 “GOCE S/L COORDINATE SYSTEM”
- FIGURE 5 “ GOCE LAUNCHER MECHANICAL I/F AND S/L
OVERALL NOMINAL DIMENSION”
- FIGURE 6 “GOCE S/L CRITICAL DIMENSIONS W.R.T.
EUROCKOT FAIRING ENVELOPE”
- FIGURE 7 “GOCE S/L LVA RING DIMENSION” (CASA DRAWING)
- FIGURE 8 “GOCE S/L UMBILICAL CONNECTORS POSITION AND
MECHANICAL I/F”
- FIGURE 9 “GOCE ACCOMMODATION WITHIN EUROCKOT”
Sheet 1 of 2 (*)
- FIGURE 10 “GOCE ACCOMMODATION WITHIN EUROCKOT”
Sheet 2 of 2 (*)

Note (*) : These two Drawings are inserted as reference only because the
Accommodation of GOCE within EUROCKOT is under Launcher
Authority Responsibility.



L.R.R.

B1-3

Xsc

L.R.R.

FLOOR 7

P.C.D.U.

P.F.C.V.
(THRUSTERS)

P.F.C.V.
(THRUSTERS)

CONNECTORS
BRKT

CONNECTORS
BRKT

FLOOR 6

S.S.T.I.
ELECTRONIC

S.S.T.I.
ELECTRONIC

G.P.S.
ANTENNA

STAR TRACKER

G.P.S.
ANTENNA

FLOOR 5

THERMAL
BRACKET

STAR TRACKER

FLOOR 4

S-BAND
ANTENNA

GRADIOMETER
ENVELOPE

RING
INTERMEDIATE TRAY

S-BAND
ANTENNA

THERMAL
BRACKET

BRACKET ESS

G.P.S.
ANTENNA

XENON
TANK

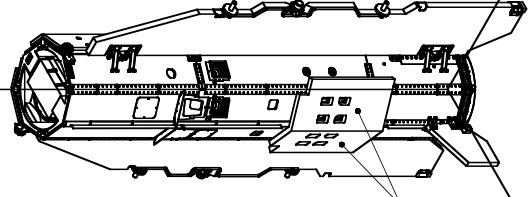
MAGNETIC
TORQUER

FLOOR 3

FLOOR 2

G.P.S.
ANTENNA

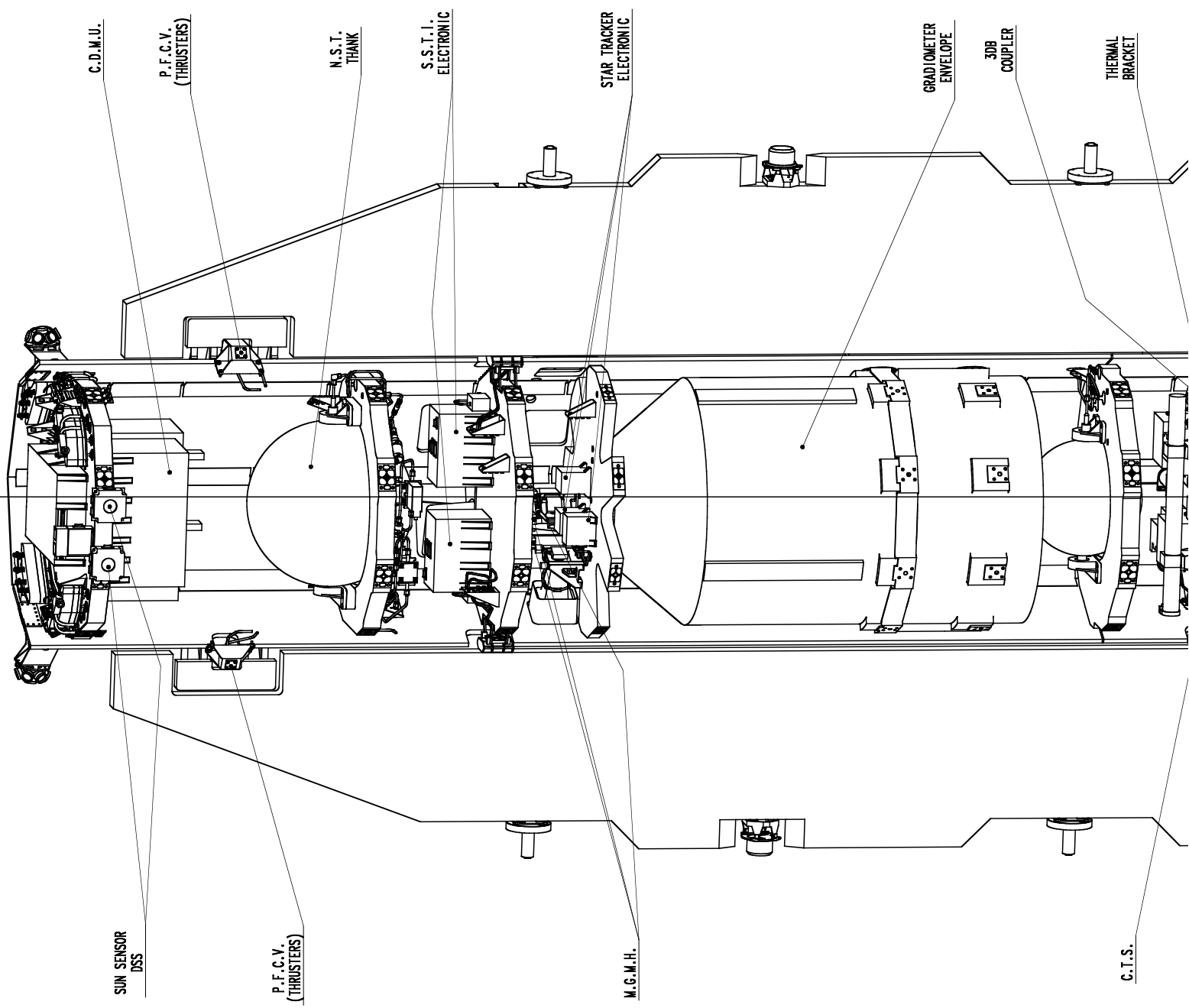
Xsc

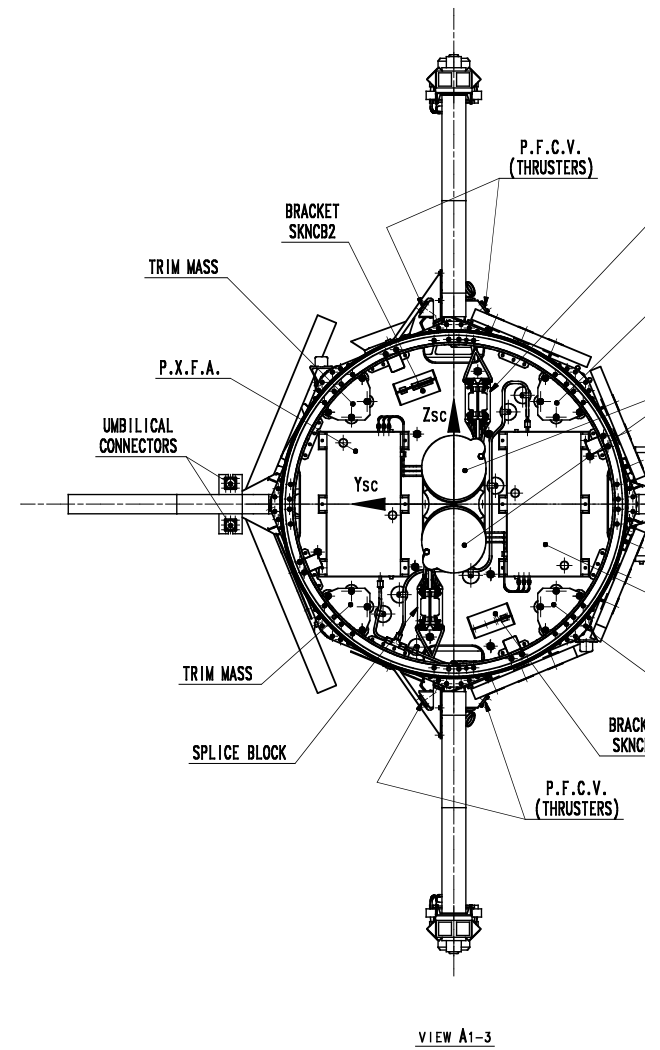
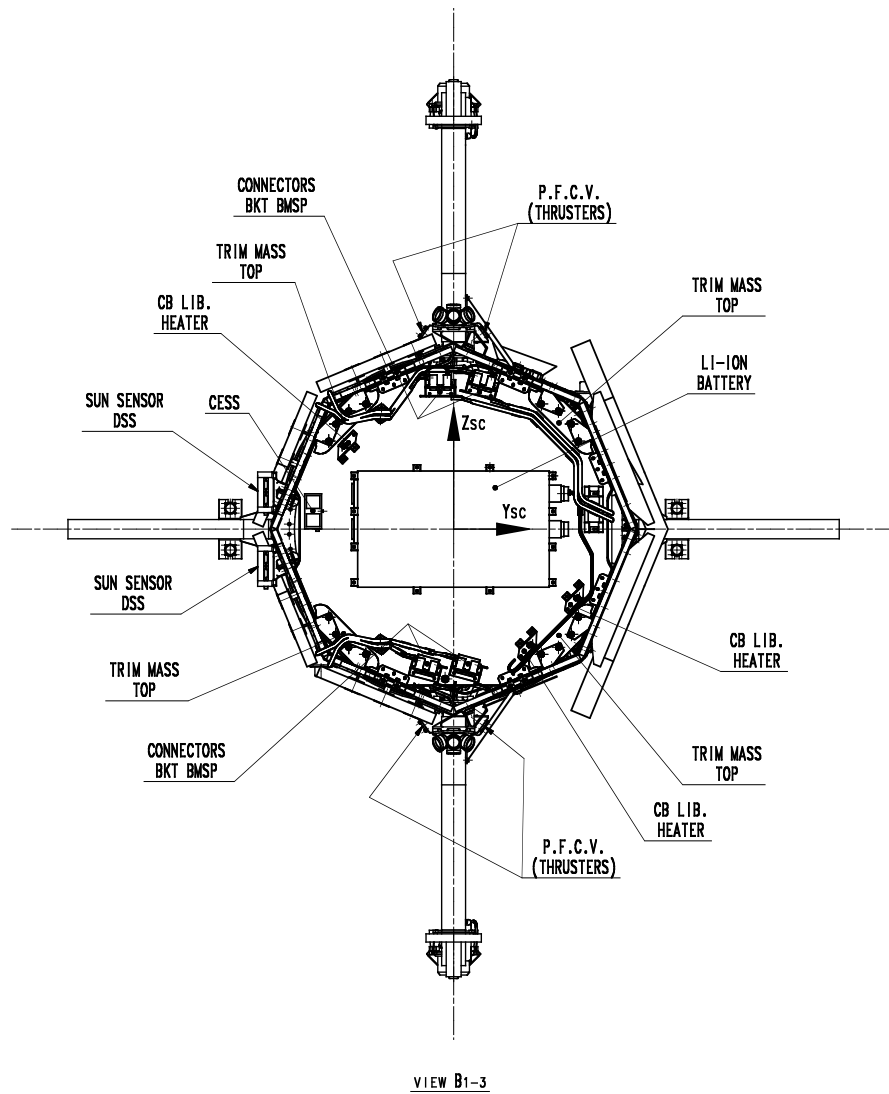


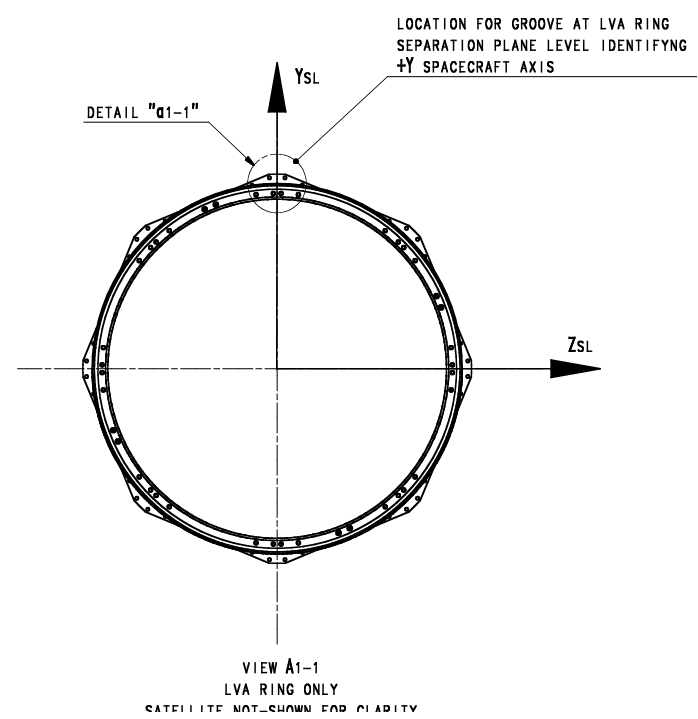
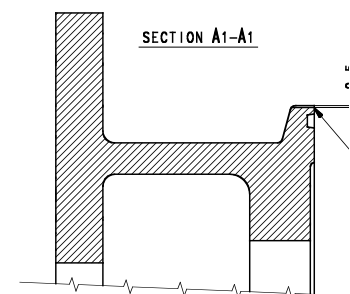
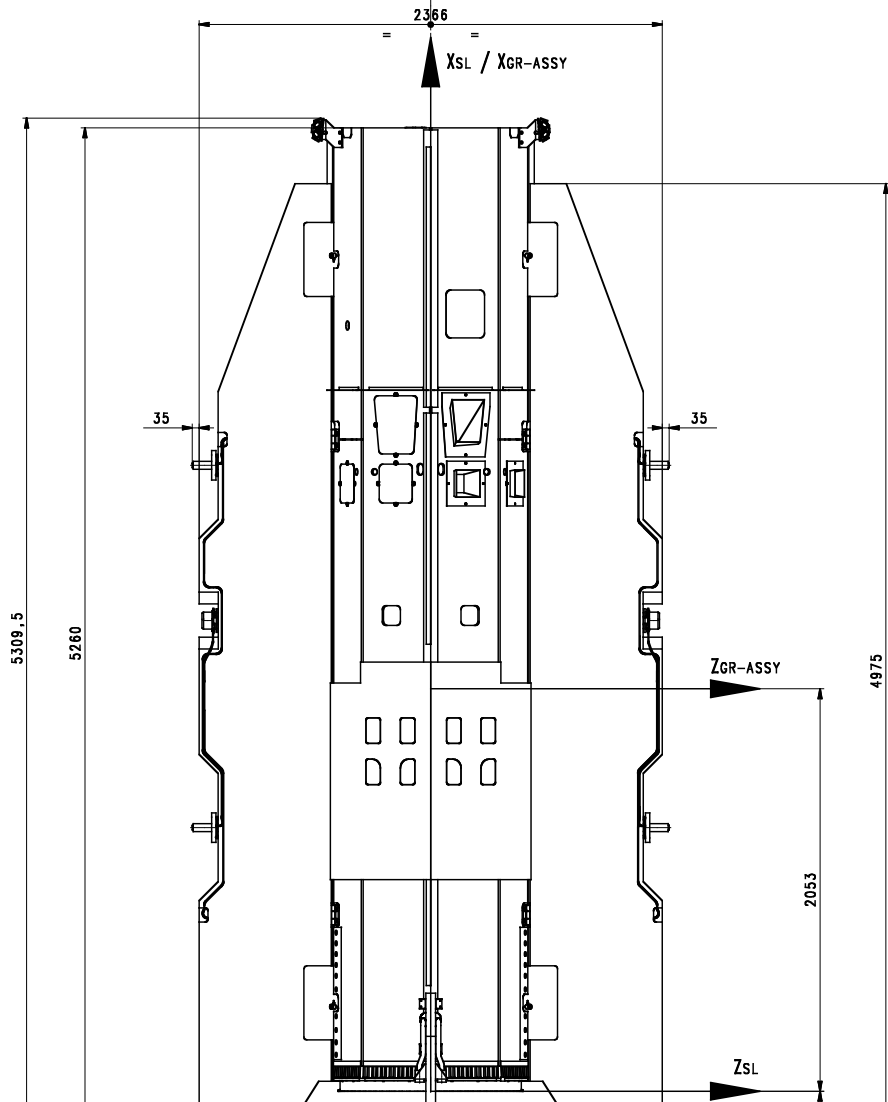
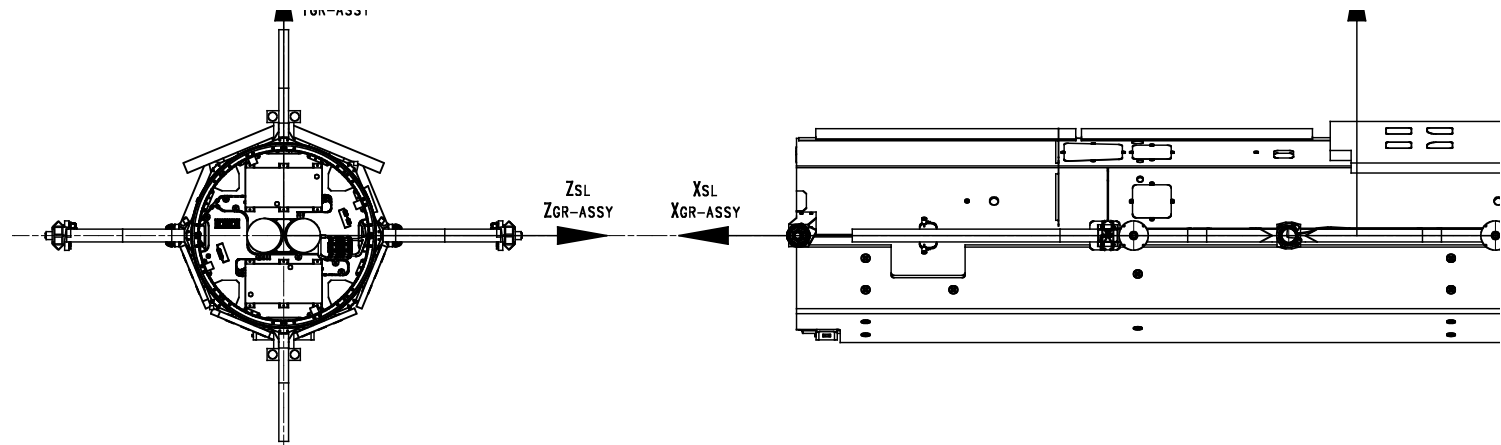
TOR
L

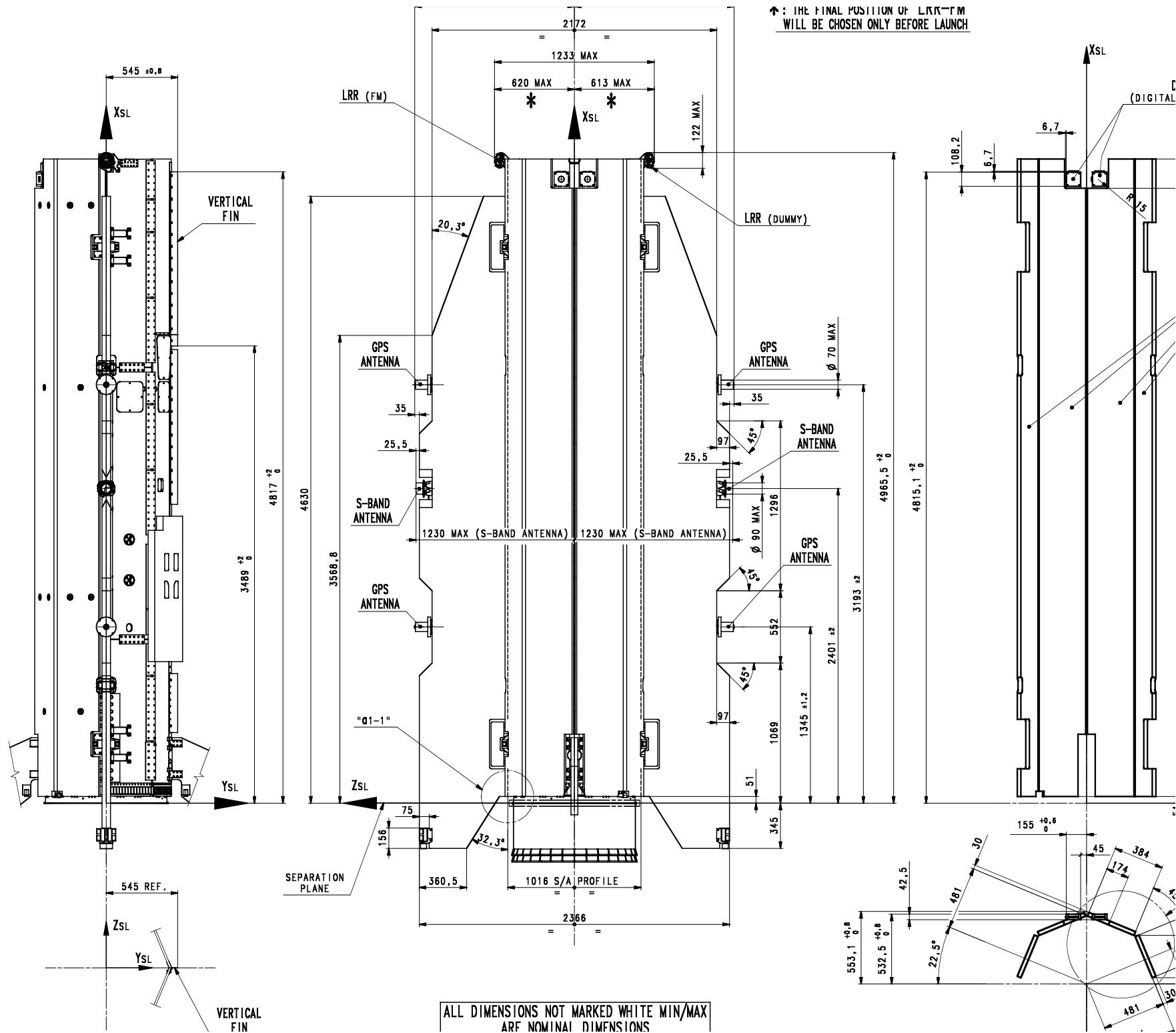
Zsc

XSC









ALL DIMENSIONS NOT MARKED WHITE MIN/MAX
ARE NOMINAL DIMENSIONS

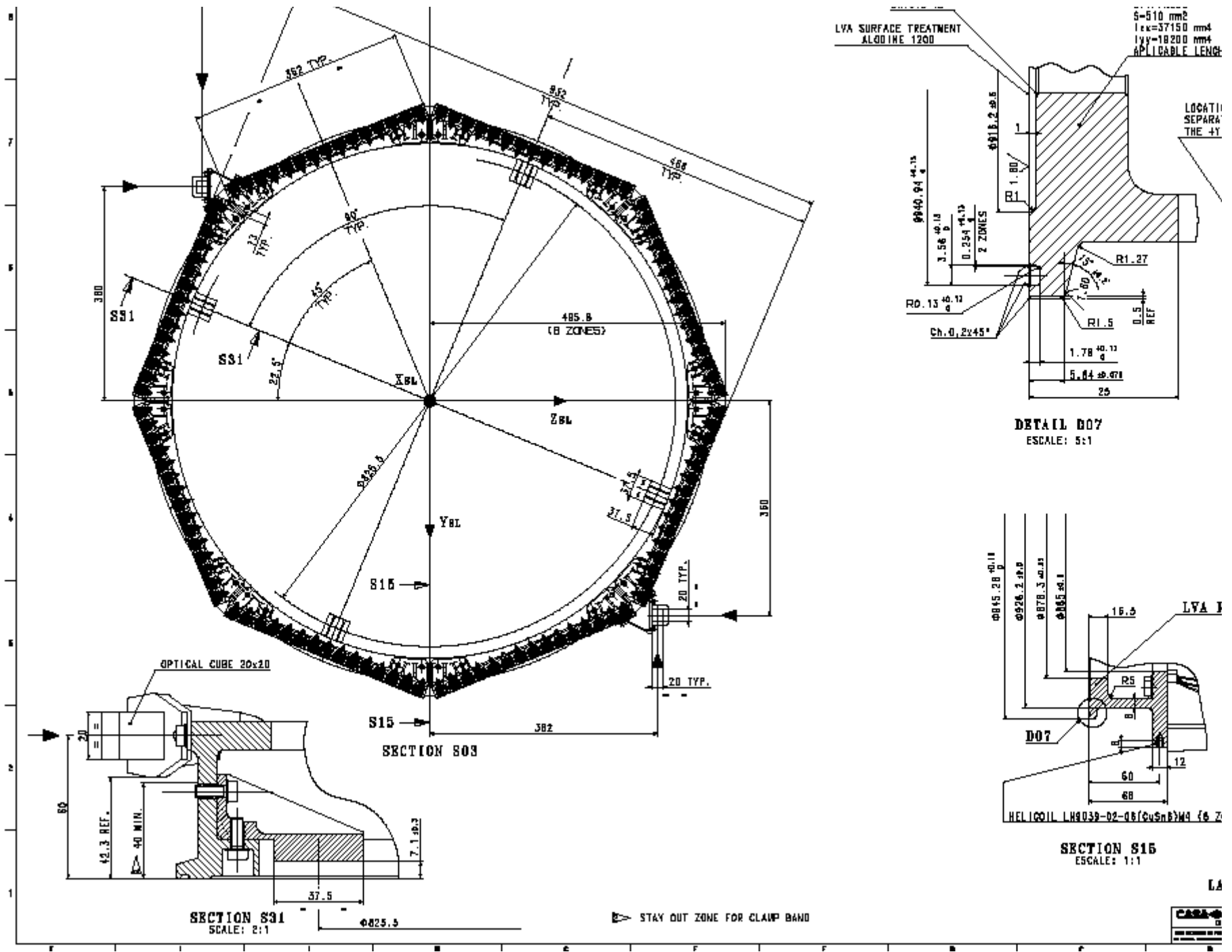
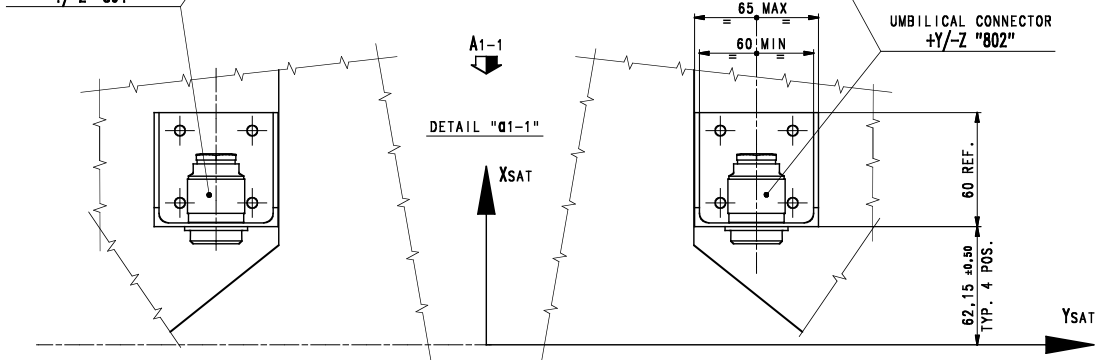
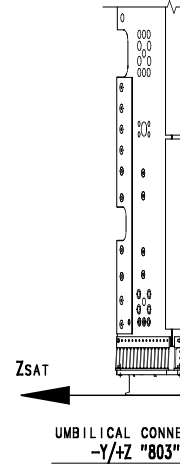
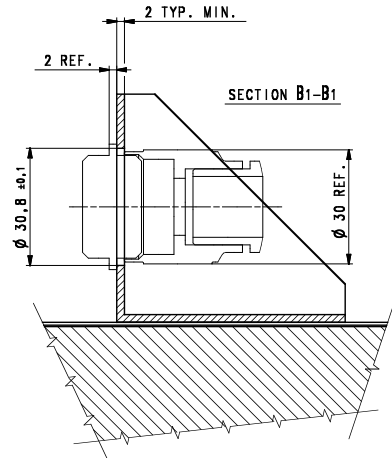
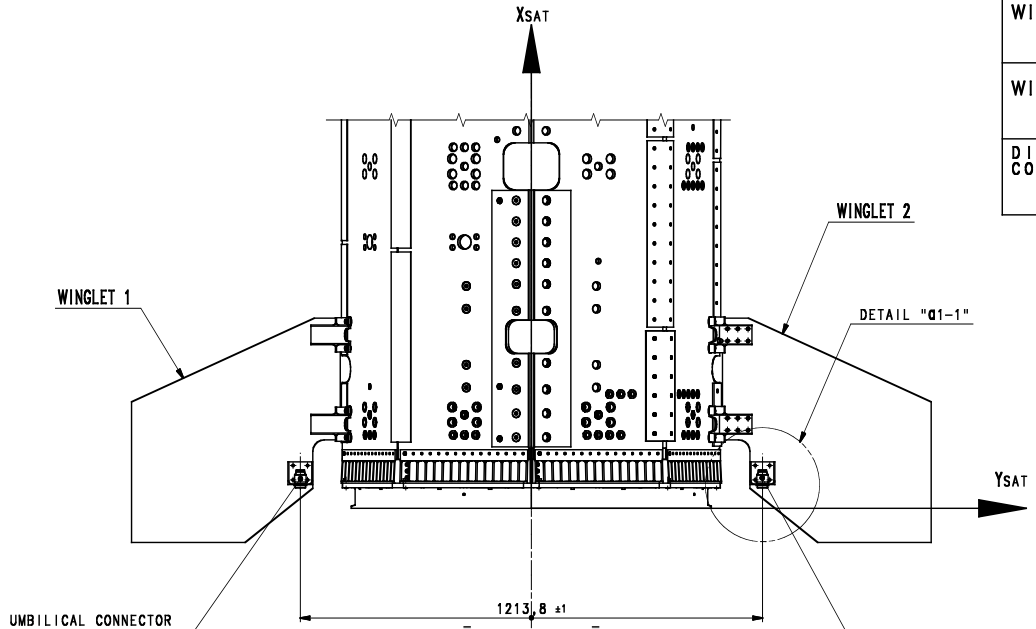
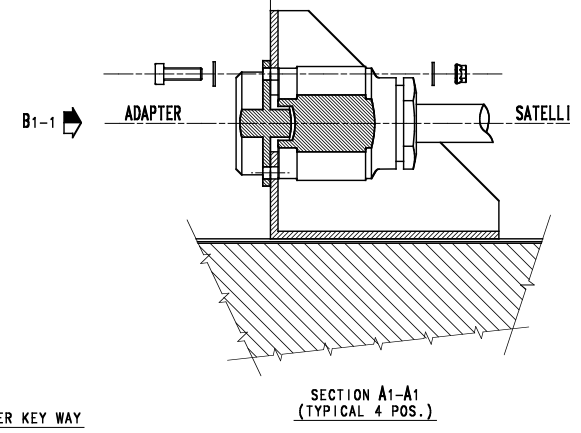
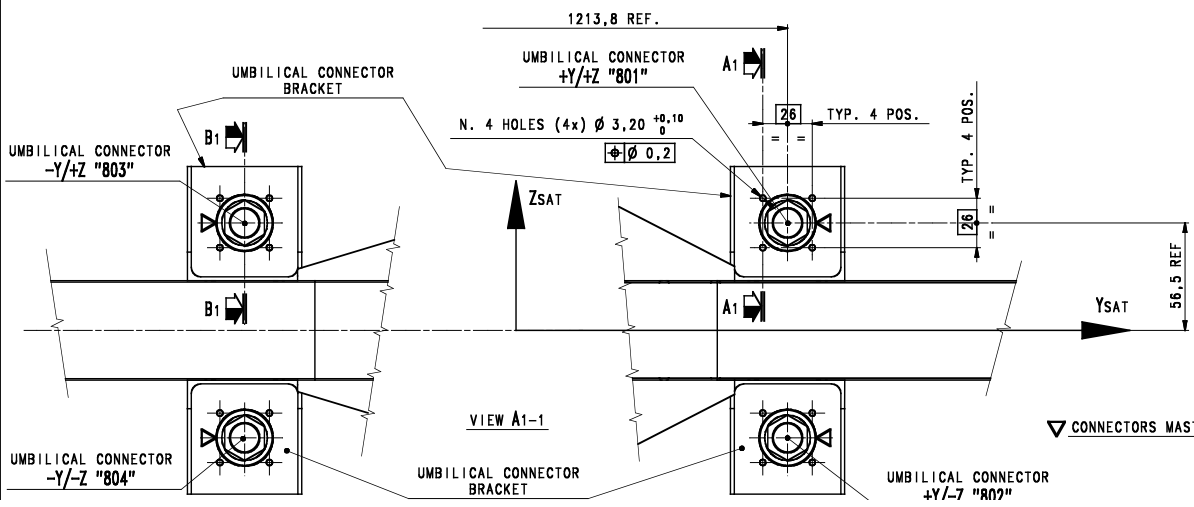


FIGURE 7 “GOCE S/L LVA RING DIMENSION” (CASA DRAWING)

WINGLET 1	801	CONNECTOR : OSR50B XXXXXXXXXXXXXXXXXXXXXXX
	802	CONNECTOR : OSR50B XXXXXXXXXXXXXXXXXXXXXXX
WINGLET 2	803	CONNECTOR : OSR50B XXXXXXXXXXXXXXXXXXXXXXX
	804	CONNECTOR : OSR50B XXXXXXXXXXXXXXXXXXXXXXX
DISCONNECTION FORCE :		TBD
CONNECTOR MASS :		ABOUT 41gr. FOR EACH SOCKET INCLUDING SHELL



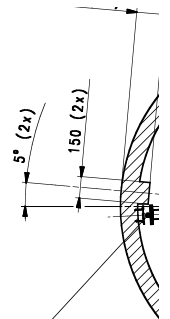
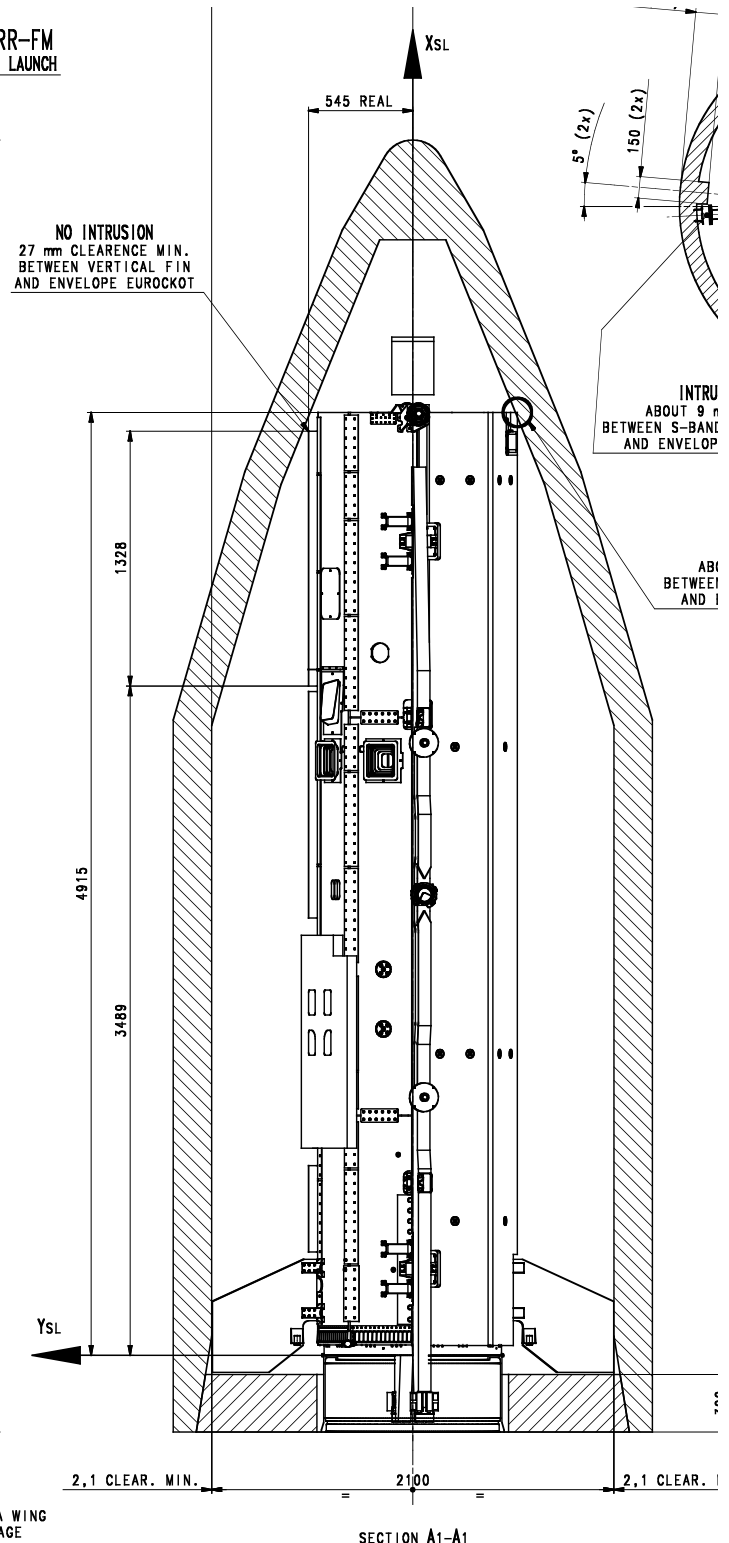
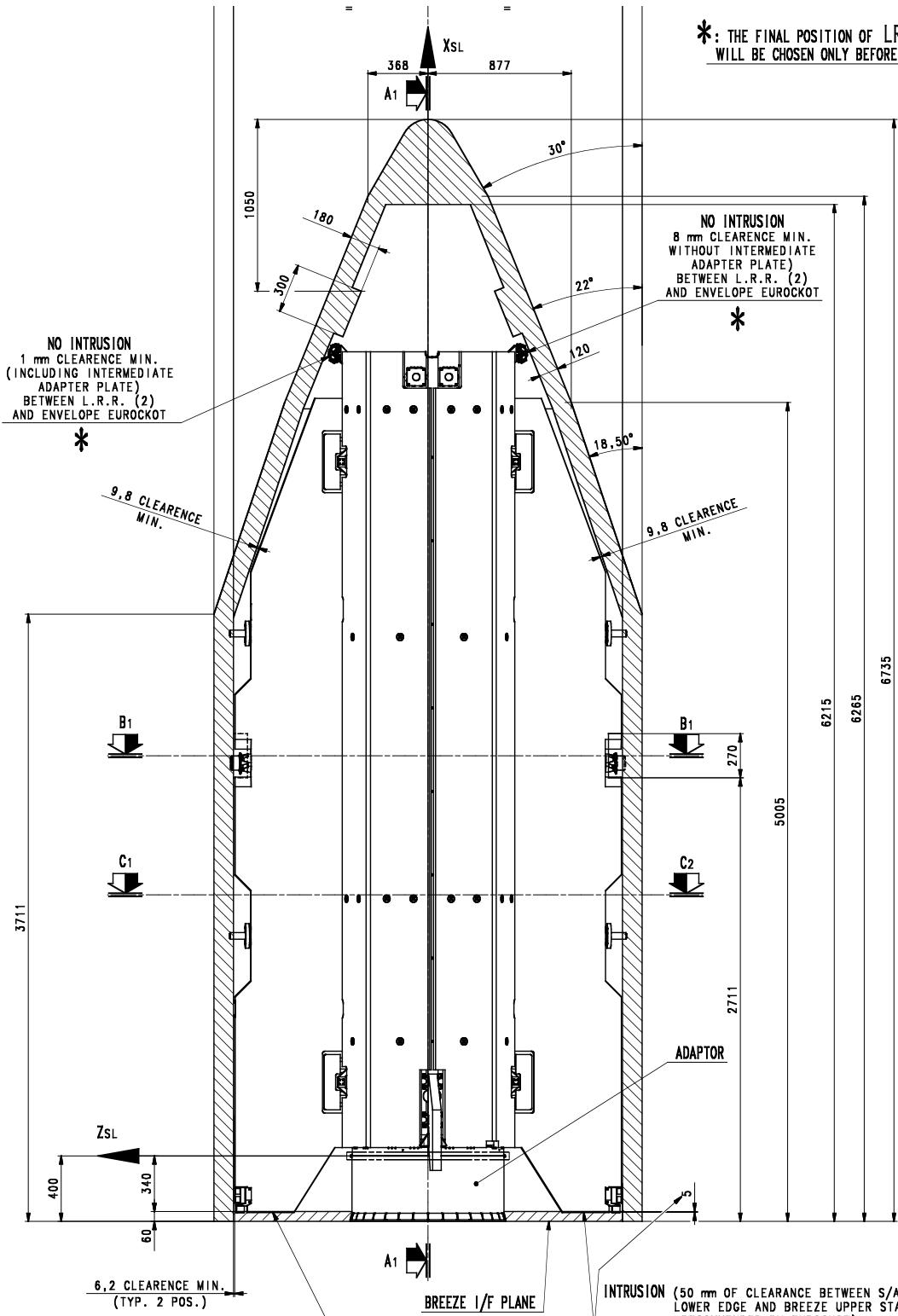
UMBILICAL CONNECTORS	UMBILICAL CONNECTORS SUPPORT BRACKET ASTRIUM/CASA
MOUNT. MATERIAL : (TBD)	MATERIAL : ALUMINUM ALLOY
SURF. ROUGHNESS : 3,2µm (TBC)	SURF. ROUGHNESS : 3,2µm (TBC)
SURF. FLATNESS : 0,1mm / 100mm (TBC)	SURF. FLATNESS : 0,1mm / 100mm (TBC)
COATING : (TBD)	COATING : ALODINE 1200 (TBD)
SCREW : M3 (P/N TBD)	BONDING H/W : (TBD)
NUT : (P/N TBD)	
WASHER : LN9016-03 (TBD)	
TORQUE : (TBD)	
BONDING H/W : (TBD)	



▽ CONNECTORS MASTER KEY WAY

SECTION A1-A1 (TYPICAL 4 POS.)

*: THE FINAL POSITION OF LRR-FM
WILL BE CHOSEN ONLY BEFORE LAUNCH



SECTION A1-A1

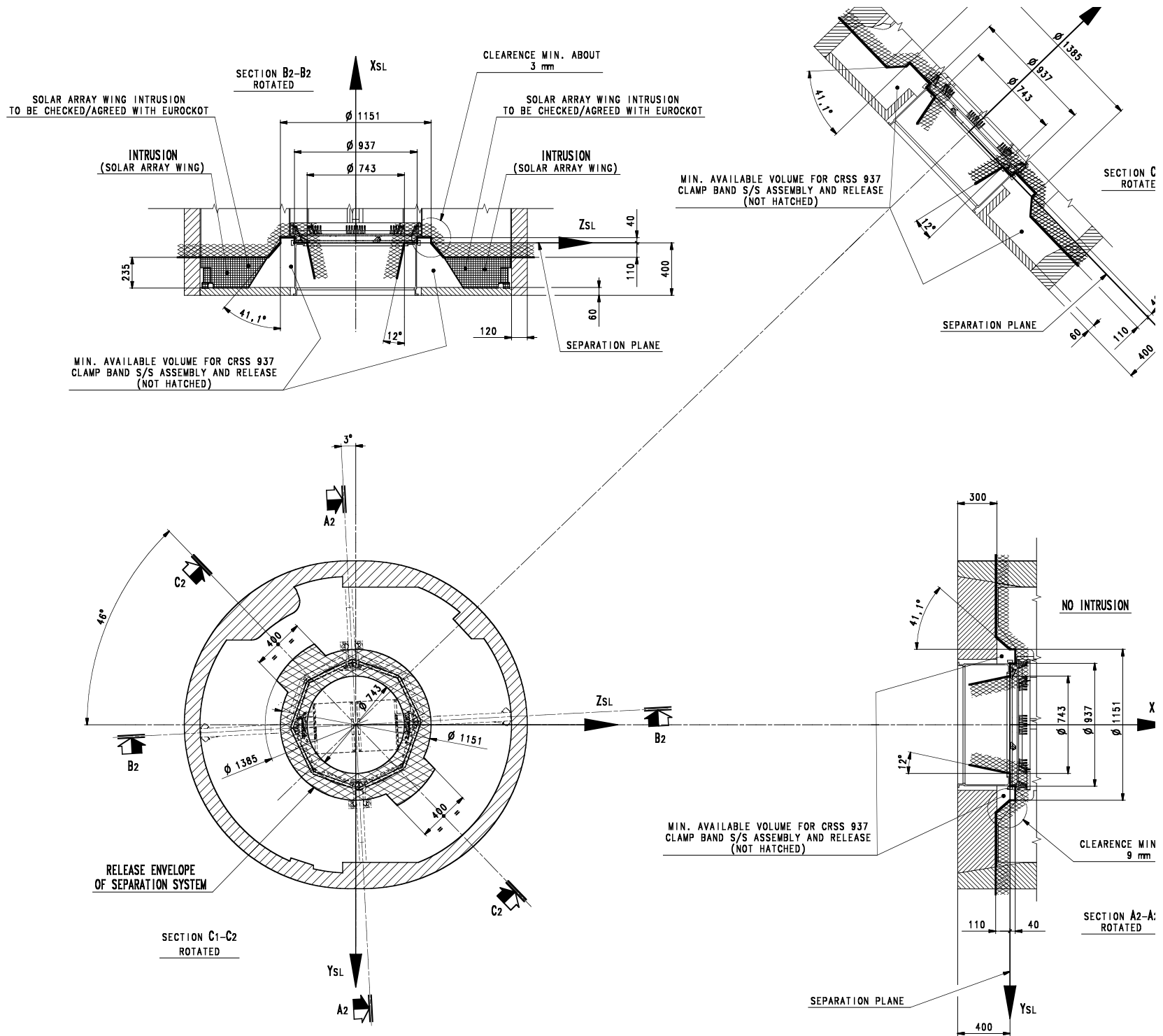


FIGURE 10 "COGE ACCOMMODATION WITHIN EUROCKOT" SL-10-50